



**PIONEERS IN
CONSTRUCTION CHEMICAL
SOLUTIONS...**

→ www.gomaxindustries.com



Follow us on



About Us

Founded in 2006, GoMax is a premium construction chemical solutions provider based in Karnal, Haryana, India. With a commitment to excellence, we have established ourselves as pioneers in the industry, setting German standard benchmarks for quality and performance. We are distinguished Manufacturer, Exporter, Supplier, Distributor, Importer of the premium quality assortment of Construction chemicals.



Admixtures



Adhesive and Repairs



Liquid Floor



Waterproofing



Sealants



Highway Repairs



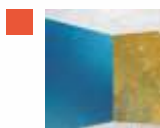
Grouting



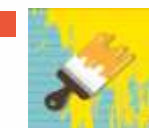
Surface Treatment



Industrial Floor Surfaces



Wall Finishing



Protective Coating



Prepacked concrete
and mortar

Embark on a Journey of Transformation with GoMax

Step into a world where imagination meets excellence, where innovations redefine the possibilities of construction. At GoMax, our offerings serve as the gateway to a realm where structures go beyond being just buildings – they become narratives of strength, endurance, and resilience.



Our Company Objective

The Company has set an objective for our entity for achieving maximum client contentment by directing our actions towards their demands. With constant support and motivation, our team works with great diligence and commitment for meeting the goal. This has helped in the massive success and growth of our organization.

- ▲ Skilled and Hard Working Professionals
- ▲ Procurement of products from Famous & Certified Manufactures
- ▲ Premium Range of Construction Chemicals

Our STANDARDS

ADHESIVE CLASSIFICATION AS PER EN 12004 STANDARD

Tile Adhesives are defined in three types, these are :

- C : CEMENTITIOUS ADHESIVE**
- D : DISPERSION ADHESIVE**
- R : REACTION ADHESIVE**

Each type of adhesive can potentially have additional characteristics, which fall under the following classes :

- 1 : NORMAL ADHESIVE** (Standard Strength Tile Adhesive)
- 2 : IMPROVED ADHESIVE** (Stronger Tile Adhesive)
- F : FAST SETTING / DRYING ADHESIVE** (With Minimum Tensile Strength of 0.5mPa within 6 hours.)
- T : SLIP RESISTANT ADHESIVE** (Tile downward movement on adhesive applied vertile surface must be < 0.5mm)
- E : ADHESIVE WITH EXTENDED OPEN TIME** (Once spread, the adhesive can be left without a tile being fixed for a longer time)
- S : SPECIAL DEFORMABLE CHARACTERISTIC, FOR CEMENTITIOUS ADHESIVE ONLY**
(Degree of flexibility of the adhesive, either S1 - flexible or S2 - highly flexible)

ADHESIVE CLASSIFICATION AS PER IS 15477 : 2019

SL. No.	CHARACTERISTIC	REQUIREMENT - N/mm2				
		TYPE 1	TYPE 2	TYPE 3	TYPE 4	TYPE 5
1.	Tensile adhesion strength, Min:					
a)	Dry Condition	0.5	1.0	1.5	1.5	2.0
b)	Wet Condition	-	1.0	1.0	1.0	-
2.	Shear adhesion strength Min L					
a)	Dry Condition	1.0	1.25	1.5	1.5	6.0
b)	Heat aging condition	-	1.0	1.0	1.0	3.0
c)	Wet Condition	-	1.0	1.0	1.0	-

Our ADHESIVE Range...



20KG

Pure Tile P10

Pure Tile P10 is a ready mixed polymer modified cement based adhesive for mixing ceramic tile, terracotta and small size natural stones for both horizontal and vertical surfaces over cementitious substrate in indoor areas. It consists of cement, fine selected sand and special additives.

Features / Advantages

- High bond strength with no shrinking cracks
- Non slip, Excellent initial adherence
- Self curing properties with very low VOC
- Easy to use - with just addition of water
- Good adhesive bond strength & bonds to various cement-based substrates
- All types of ceramic tile terracotta, brick, vitrified tiles*, natural stones and large format tile**
- Vitrified Tiles : Only recommended to fix on floors for maximum size up to 4 square foot.

CLASS	CHARACTERISTIC
C1	T
COMPLIANT WITH EN 12004 STANDARD	

Suitable Substrates

Concrete / Cement Plaster / Brick Masonry / Cement Based Screeds Cement Based Surfaces

GREY

Consumption

Approx. 1.2 kg/ m2 per mm of thickness.

Coverage will vary depending on trowel notch size, type, size of tile and substrate smoothness and evenness

Approvals: IS 15477:2019 TYPE 1 || C1 T AS PER EN 12004



Pure Fix P40



20KG

Suitable Substrates

Cement-based screeds & bed / Gypsum & cement based plasters / Concrete surfaces & bricks / Existing tiles & stones / Waterproofing products / other cement-based surface.

GREY AND WHITE

Pure Fix P40 is a ready mixed polymer modified cement based powder which is multi-purpose tile adhesive. It provides outstanding bonding of tiles with no vertical slip & long open tie for porcelain tiles, ceramic tiles & natural stone at different temperatures. It requires only addition of water.

Features / Advantages

- Low voc
- Floor can be made available for traffic after 24 hours
- Highly Polymer modified - provides high adhesion, allows to bond with variety of substrates, for fixing a variety of tiles and stones
- Sag Resistant formula provides hassle free application on vertical walls
- Water & shock resistant which is suitable for wet areas & commercial floor too.
- Contains Special Additives to obtain longer pot life, excellent adhesion and waterproof

CLASS	CHARACTERISTIC
C2	T
COMPLIANT WITH EN 12004 STANDARD	

Consumption

Approx. 1.2 kg/ m2 per mm of thickness.

Coverage will vary depending on trowel notch size, type, size of tile and substrate smoothness and evenness

Approvals: IS 15477:2019 TYPE 2 || C2 TE AS PER EN 12004



Pure Flex P100



20KG

Suitable Substrates

Concrete / Cement screeds and plasters / Aerated concrete block / Gypsum plasters / Facades / Deformable substrates

GREY AND WHITE

Pure Flex P100 is a ready mixed polymer modified cement based powder which is multi-purpose tile adhesive. It provides outstanding bonding of tiles with no vertical slip & long open time for porcelain tiles, ceramic tiles & natural stone at different temperatures. IS 100 requires only addition of water. It is characterized by high plasticity, adhesiveness & bonding flexibility.

Features / Advantages

- Renovation in heavily trafficked areas and where surfaces need to be quickly back in service, such as public buildings, motorway services, pedestrian walkways, supermarkets, showrooms, airports etc
- Rapid installation or renovation in swimming pools, industrial plants (breweries, wine cellars, dairies etc.) refrigeration units
- Rapid installation in bathrooms, showers, kitchens, conservatories and on balconies and terraces
- Polymer modified and fiber reinforced provides excellent bond strength at different conditions
- Sag Resistant formula for hassle free application on vertical walls
- Water & shock resistant suitable for web areas & commercial floor
- Deformable adhesive sustains substrate vibration & Low VOC

CLASS	CHARACTERISTIC
C2	TE S1
COMPLIANT WITH EN 12004 STANDARD	

Consumption

Approx. 1.1 kg - 1.2 kg/m2 per mm of thickness. Coverage will vary depending on trowel notch size, type, size of tile and substrate smoothness and evenness

Approvals: IS 15477:2019 TYPE 2 || C2 TE S1 AS PER EN 12004





Application Areas

Walls and Floors / Interiors / Dry areas / Showers / Swimming Pools / Heavily Trafficked Floors / Hygienic Sterile Areas / Kitchens and Cafeterias

Purepoxy

Purepoxy is two - component epoxy resin - based grout for floors and walls for interior with a high degree of chemical resistance, hard wearing , colour fastness and impervious tile joint. It is suitable for residential and commercial installation for resisting substantial abuses and chemical attacks

Features / Advantages

- Especially for decoration: smooth , even , waterproof finish
- Exceptional resistance to moisture, chemical and mechanical damage
- Recommended for swimming pools , steam rooms , spas , walk in showers etc
- Easy to mix, apply and clean
- Available in range of colours
- No cracking
- Water cleanable when freshly applied
- Uniform colour with anti fungal & anti bacterial properties

Consumption

Approx. 1.5 kg/m² per mm of thickness.

Coverage will vary depending on trowel notch size, type , size of tile and substrate smoothness and evenness

Approvals: IS 15477:2019 TYPE 2 || C2 TE S1 AS PER EN 12004



Purecrete



Application Areas

Walls and Floors / Interior and Exterior / Dry Areas / Showers / Swimming Pools / Heavily Trafficked Floors / Movement vibration

Purecrete is a high performance polymer modified tile grout with non - shrink properties, excellent workability for grouting tile joints in wet and dry areas for internal and external application.

Features / Advantages

- High abrasion resistance
- Very low water absorption
- Stain resistant
- Non shading colour
- Easy to finish
- Anti cracks (joints upto 3mm width)
- Smooth finishing
- Low shrinkage and high strength
- Available in wide range of attractive colours

☐ GREY AND WHITE

Consumption

Approx. 1.5 kg/m² per mm of thickness.

Coverage will vary depending on trowel notch size, type , size of tile and substrate smoothness and evenness

Approvals: IS 15477:2019 TYPE 2 || C2 TE S1 AS PER EN 12004





DIRECTIONS FOR USE



AN ISO 9001 : 2008 CERTIFIED COMPANY

PRODUCT RANGE

- ▲ **Concrete Admixtures**
- ▲ **Water Proofing** Agents
- ▲ **Flooring** Solution
- ▲ **Concrete** Repairs & Strengthening
- ▲ **Curing Compound** Agents
- ▲ **Protective & Decorative** Coating
- ▲ **Adhesive & Bonding** Agents

+91-92158-44406
sharad@gomaxindustries.com
www.gomaxindustries.com